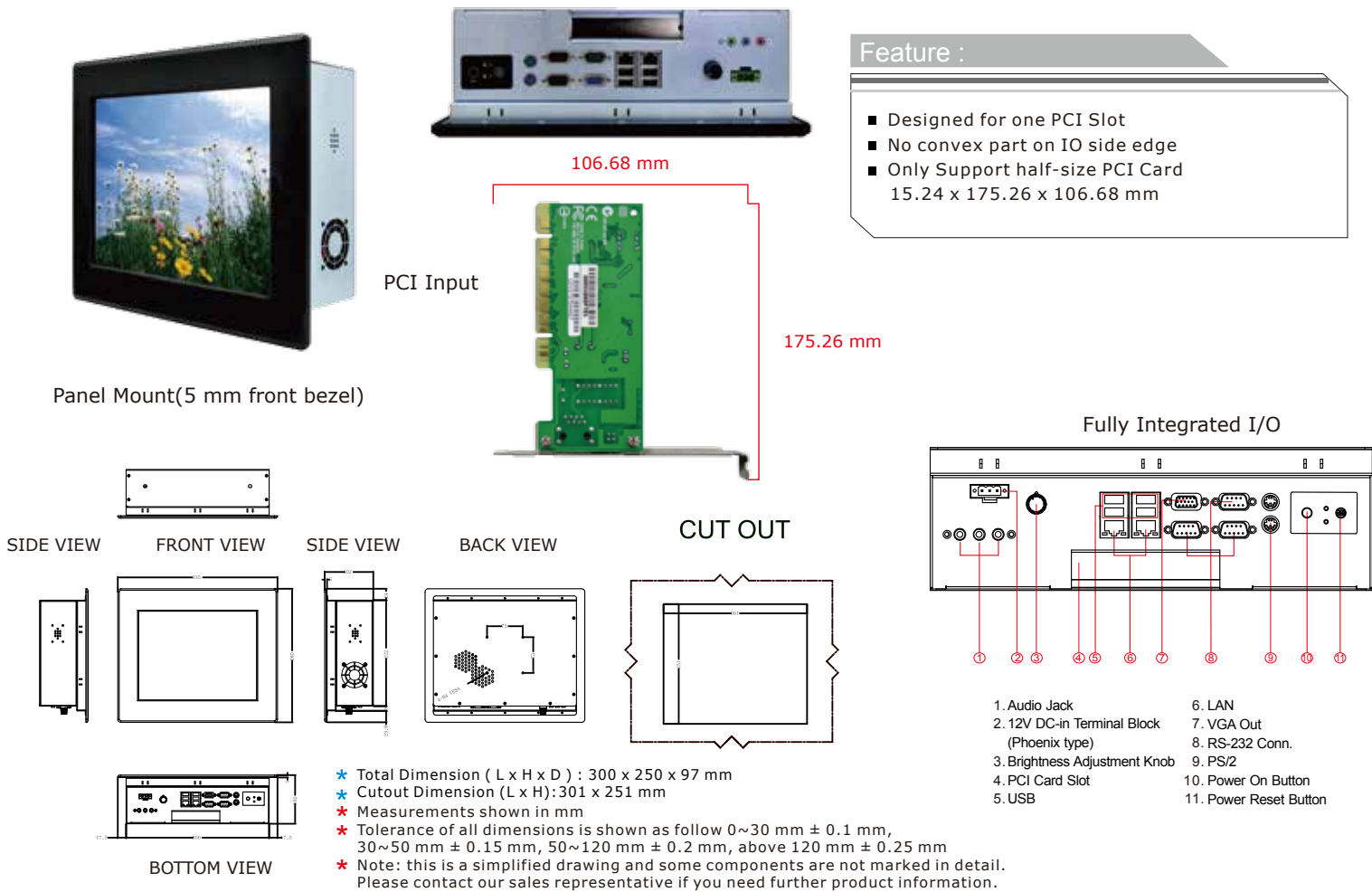


R12ID7T-PML1PS 12.1" Panel PC (Intel® Atom Dual Core D2550)

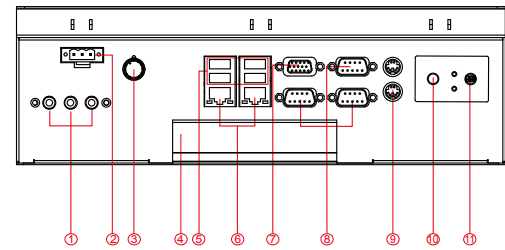
Mechanical Design



Feature :

- Designed for one PCI Slot
- No convex part on IO side edge
- Only Support half-size PCI Card
15.24 x 175.26 x 106.68 mm

Fully Integrated I/O



- | | |
|---|------------------------|
| 1. Audio Jack | 6. LAN |
| 2. 12V DC-in Terminal Block
(Phoenix type) | 7. VGA Out |
| 3. Brightness Adjustment Knob | 8. RS-232 Conn. |
| 4. PCI Card Slot | 9. PS/2 |
| 5. USB | 10. Power On Button |
| | 11. Power Reset Button |

Specifications

System :

- CPU : Intel® Atom Dual Core D2550 1.86 GHz
- Memory : 1 x SODIMM Max 4GB DDR3 800/1066
- System Chipset : Intel® NM10
- SATA : 2 x SATA II
- LAN : Dual Broadcom BCM 57780 GbE controller
- Audio Codec : Realtek ACC886 HD Audio Codec

Panel Spec :

- Size/Type : 12.1" TFT
- Resolutions : 800 x 600
- Brightness : 450 cd/m² (typ.)
- Contrast Ratio : 700 : 1 (typ.)
- Viewing Angles : -80~80(H); -75~65(V)
- Max Colors : 16.2M

Input / Output :

- Serial Ports : 2 x RS232, 1 x RS232/422/485
- USB Ports : 4 x USB
- Keyboard / Mouse : 2 x PS/2
- Ethernet : 2XRJ45-10/100/1000Mbs
- VGA : 1 x VGA (female)
- Audio : Line-Out, Line-In, Mic in

• Default setting: RS232

Environment Considerations :

- Operating Temperature : 0°C to 50°C
- Operating Humidity : 30% to 90% (non condensing)

Expansion Slot :

- 1 x PCI (15.24 x 175.26 x 106.68 mm)

* A customized housing is needed if you would like to have the PCI expansion.

Power Specifications :

- Power Input : Terminal block Phoenix type / 12V DC-in
- Power Consumption : 33W (typ.)(Max. backlight & high CPU load)

Accessories :

- External Power Supply 80W w/power cord

Order Options :

Mechanical : Open Frame
Touch : Resistive

Storage : 2.5" HDD/ 2.5" SSD
RAM : DDR3 800/1066
Max 4GB
OS : Windows XP(E) (Optional)
Windows XPPE (Optional)
Windows 7 (Optional)
Linux (Optional)

(A customized housing is needed if you have demands of IR touch)