



## DLF2415 / DLH2415

### 24" TFT LCD, LED Backlight 1000nits,FHD(1920x1080)

24" TFT LCD panel, built-in 1000 nits high bright for sunlight readable LCD display, high transmittance color filter, high transmission polarizing plates, Low Power Consumption, suitable for kiosk, advertising, POS, marine, transportation, gaming, studio display, gas pump.

#### Key Features

- Sunlight Readable
- LED Backlight
- FHD(1920x1080) High Definition
- High Shock & Vibration Resistance
- Low Power Consumption
- High Uniformity
- Low EMI Noise
- Wide Dimming
- Life Expectancy



### Specifications

V1

Model No.	DLF2415	DLH2415
Description	24" TFT LCD, LED Backlight 1000nits,FHD(1920x1080)	
Display Area (mm)	531.4 x 298.9 mm	
Brightness	1000 cd/m <sup>2</sup>	
Resolution	1920x1080 (FHD)	
Contrast Ratio	1000 : 1	
Pixel Pitch (mm)	0.276(H) x 0.276(V)	
Viewing Angle	+85°~ -85°(H), +80°~ -80°(V)	
Display Colors	16.7M	
Response Time (Typical)	5ms	
Sync	LVDS	
Power Consumption	30W / 38W	
Dimensions (mm)	555.9x323.3x14.6 mm	
Weight (Net)	2.67kg	
LED Driving Board	LID 24A	
Control Board (Optional)	<input type="checkbox"/> AD2662GD <input type="checkbox"/> AD2662GDVAR <input type="checkbox"/> AD2662GD    VGA+DVI <input type="checkbox"/> AD2662GDVAR    VGA+DVI (Optional S-Video/ Component / Audio)	
F / R Control Button	<input type="checkbox"/> 4 Key <input type="checkbox"/> 4 Key    Power Switch, Menu, Select (+,-),	
OSD Menu	Brightness, Contrast, H/V Position, Color, Phase, Clock...	
Optional	<input type="checkbox"/> AOT <input type="checkbox"/> Touch Screen	

Specifications are subject to change without notice.

All brands or product names are trademarks or registered trademarks of their respective companies.

**DLF**= Panel+LED Driving Board

**DLH**= Panel+LED Driving Board+Control Board

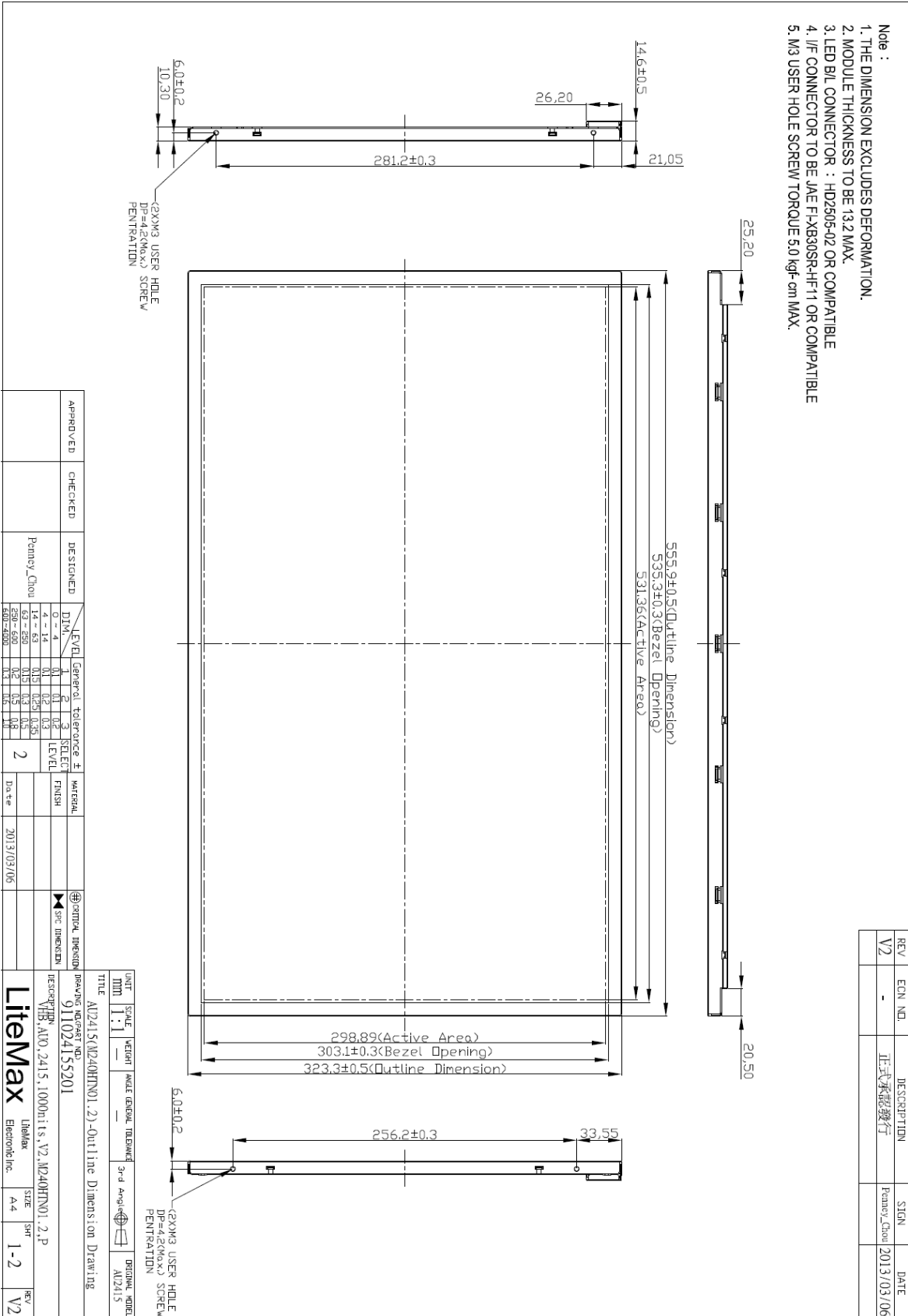


# Mechanical Drawing

## Outline Dimensions

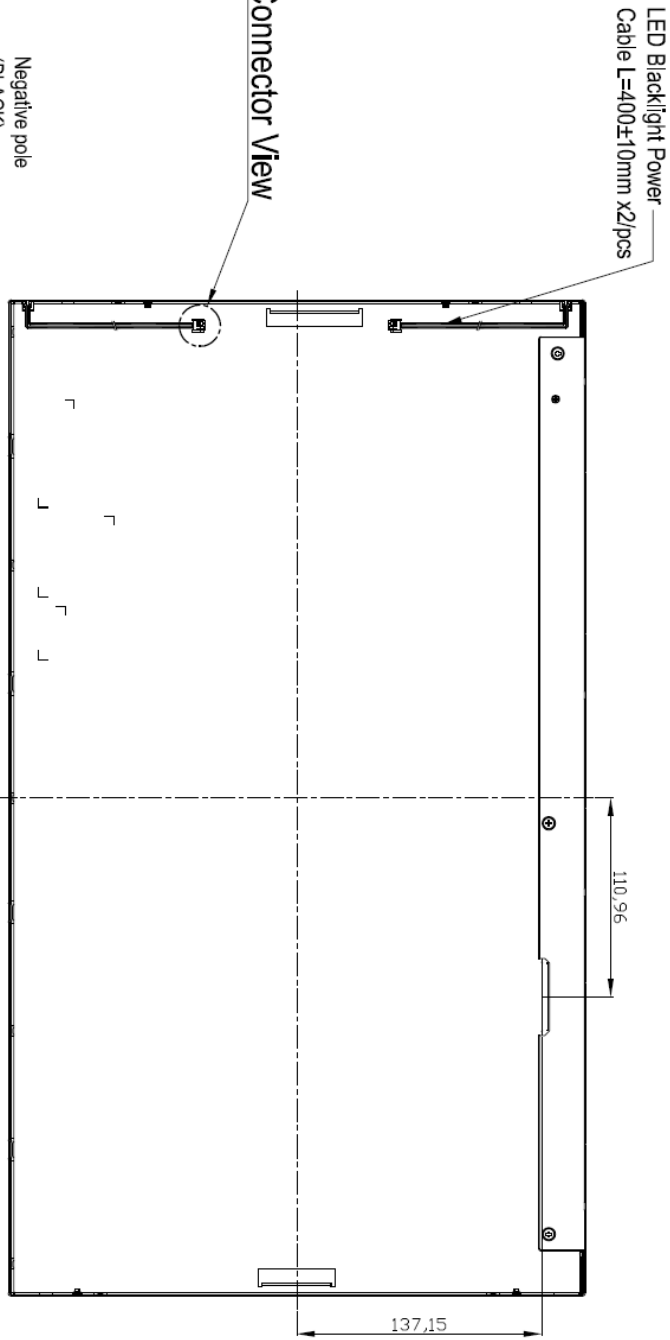
Unit:mm

- Note :
1. THE DIMENSION EXCLUDES DEFORMATION.
  2. MODULE THICKNESS TO BE 13.2 MAX.
  3. LED B/L CONNECTOR : HD2605-02 OR COMPATIBLE
  4. I/F CONNECTOR TO BE JAE F-HX830SR-HF-11 OR COMPATIBLE
  5. M3 USER HOLE SCREW TORQUE 5.0 kgf-cm MAX.





- Note :
1. THE DIMENSION EXCLUDES DEFORMATION.
  2. MODULE THICKNESS TO BE 13.2 MAX.
  3. LED B/L CONNECTOR : HD2505-02 OR COMPATIBLE
  4. I/F CONNECTOR TO BE JAE FI-XB30SR+HF11 OR COMPATIBLE
  5. M3 USER HOLE SCREW TORQUE 5.0 kgf-cm MAX.



REV	ECN NO.	DESCRIPTION	SIGN	DATE
V2	-	正式承認發行	Penny-Chou	2013/03/06

**Connector View**

LEVEL	General	Tolerance	±	MATERIAL
0 ~ 4	1	0.1	0.2	
4 ~ 14	0.1	0.2	0.3	
14 ~ 63	0.15	0.25	0.35	
63 ~ 250	0.2	0.3	0.5	
250 ~ 630	0.3	0.5	0.8	
630 ~ 1000	0.5	0.8	1.0	

UNIT	SCALE	WEIGHT	ANGLE	GENERAL TOLERANCE	3rd Angle	PROJ. SYM.	ORIGINAL MODEL
MM	1:1	-	-	-	☑	☑	AU2415

TITLE: AU2415(M240HTN01.2)-Outline Dimension Drawing

DRAWING NO./PART NO.: 911024155201

DESCRIPTION: VHS, A10.2415.1000nits V2, M240HTN01.2.P

**LiteMax** LiteMax Electronic Inc. SIZE: A4 SRT: 2-2 REV: V2

APPROVED	CHECKED	DESIGNED	DATE
		Penny-Chou	2013/03/06



### Ordering Information

Part Number	Description
<b>DLF2415-ENN-A01</b>	24", 1000nits, FHD(1920*1080), LID24, V01
<b>DLH2415-ENN-G01</b>	24", 1000nits, FHD(1920*1080), AD2662GDVAR, LID24, V01

### Optional Accessories

Part Number	Description
<b>840612051100</b>	ADAPTER.12V.5A.60W.EA1050A,P
<b>810618301010</b>	CABLE.POWER.AC.1830mm USA type
<b>810618301090</b>	CABLE,POWER,AC,1830mm Europe type
<b>810618301050</b>	CABLE.POWER.AC.1830mm UK type
<b>810618301170</b>	CABLE.POWER,AC,1830mm Australia type
<b>810618301030</b>	CABLE.POWER.AC.1830mm Japan type