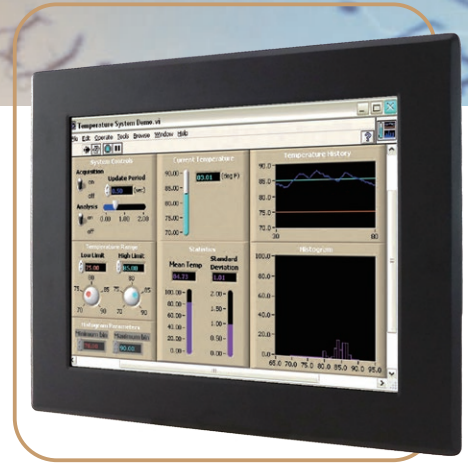


Panel Mount LCD



19"

Specifications



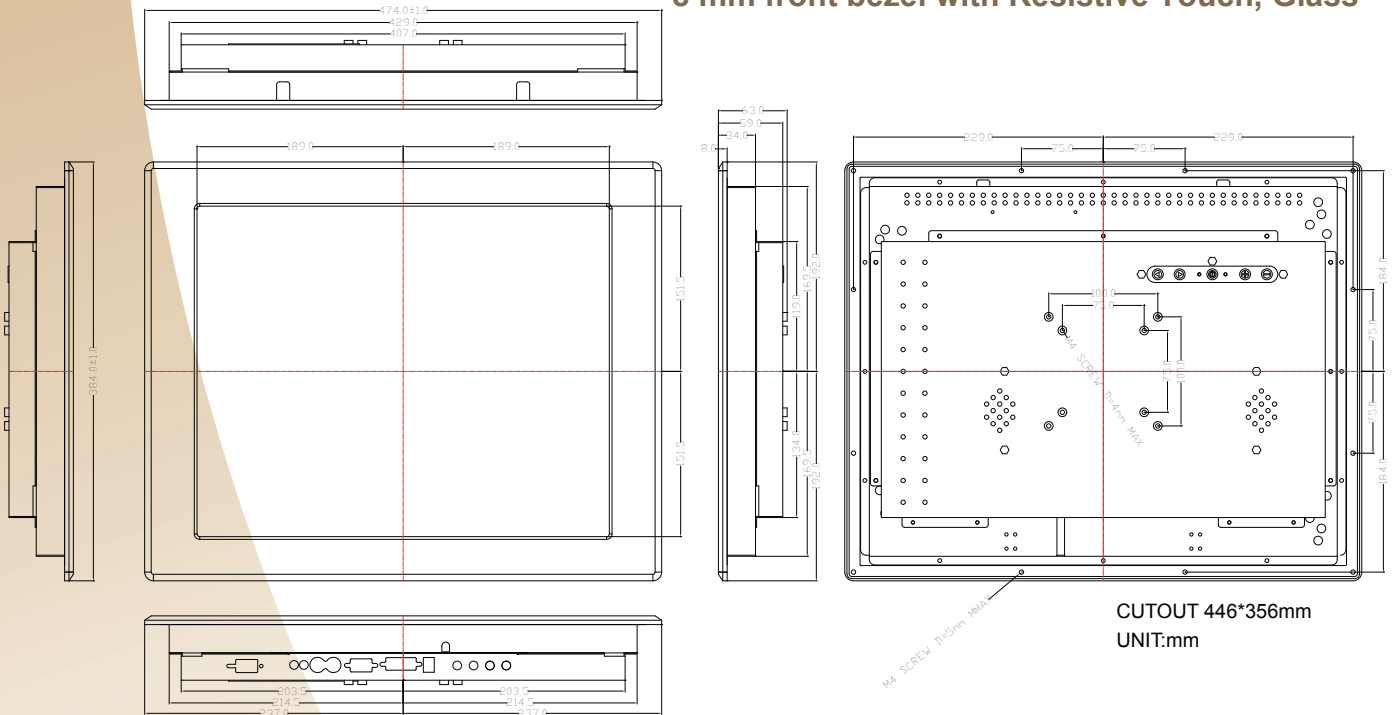
Model Name	R19L300-PMMD
Viewable Size Image	19"
Active Display Area(mm)	376.32(H)x301.56(V)
Pixel Pitch(mm)	0.294(H)x0.294(V)
Number of Pixels	1280x1024
Contrast Ratio	1300:1 (typ.)
Display Color	16.7M (8 bits/colors)
Brightness(cd/m ²)	300
Viewing Angle(CR>=10)	-89~89(H);-89~89(V)
Synchronization Range	
Horizontal/Vertical	31.5~80.0KHz/60~75Hz
Recommended Resolution	1280x1024@60Hz, 75Hz
Signal Connector	15 pin D-Sub
Power Source	12V DC in, with External AC to DC Adapter (100~240V AC)
Power Consumption	41W typical, normal operation
Power Management	VESA DPMS Compliant
Plug & Play	VESA DDC 1/2B
Optional Video Input	S-Video, Composite
Optional DVI Input	Yes
Optional Touch Screen	Resistive, Capacitive, SAW

Remarks: R19L300 series= VGA input only

R19L340 series= VGA+Video Input

Mechanical Drawing

8 mm front bezel with Resistive Touch, Glass



*Note: this is a simplified drawing and some components are not marked in detail. Please contact our sales representative if you need further product information.