



## SSF2945/SSH2945-E V2

### 29.3" Resizing LCD, 1000 nits LED backlight, 1920x710 ultra wide aspect ratio 16:6

SSF/SSH2945-E V2 is an innovative ultra-wide, sunlight readable, LED backlight LCD display. It provides LCD panel with specific ratios for digital signage, public transportation, exhibition hall, department store, vending machine and industrial applications. Incorporating with A.D. control board and backlight design, it is high brightness and sunlight readable panel, can display high-quality video with energy-efficient.

#### Key Features

- Resizing LCD
- Ultra Wide Screen (16 : 6)
- Sunlight Readable
- LED Backlight
- High Brightness 1000 nits
- Low Power Consumption
- Wide Dimming
- Life Expectancy (70,000hrs)



### Specifications

V1

<b>Model No.</b>	<b>SSF2945/SSH2945-E V2</b>
<b>Description</b>	29.3" Resizing LCD, 1000 nits LED backlight
<b>Display Area</b>	698.4*258.2 mm
<b>Brightness</b>	1000 cd/m <sup>2</sup>
<b>Resolution</b>	1920 x 710
<b>Aspect Ratio</b>	16 : 6
<b>Contrast Ratio</b>	3000:1
<b>Pixel Pitch (mm)</b>	0.3637 x 0.3637
<b>Pixel Pre Inch (PPI)</b>	69.7
<b>Viewing Angle</b>	178°(H), 178°(V)
<b>Display Colors</b>	16.7M
<b>Response Time (Typical)</b>	8 ms
<b>Sync</b>	LVDS
<b>Power Consumption</b>	48W/53W
<b>Dimensions (mm)</b>	735.4 x 298.9 x 18.0
<b>Weight (Net)</b>	3.2 kg (VHB only)
<b>LED Driving Board</b>	<b>LID29A</b>
<b>Control Board (Optional)</b>	<b>AD2662GD / AD2662GDVAR</b>
<input type="checkbox"/> AD2662GD	VGA + DVI
<input type="checkbox"/> AD2662GDVAR	VGA + DVI (Optional AV/ S-Video / Component / Audio)
<input type="checkbox"/> Others	
<b>F / R Control Button</b>	5 Key / 4 Key
<input type="checkbox"/> 4 Key	Power Switch, Menu, Select (+,-),
<input type="checkbox"/> 5 Key	Power Switch, Menu, Select (+,-),Auto
<b>OSD Menu</b>	Brightness, Contrast, H/V Position, Color, Phase, Clock...
<b>Optional</b>	<input type="checkbox"/> Touch Screen

Specifications are subject to change without notice.

All brands or product names are trademarks or registered trademarks of their respective companies.

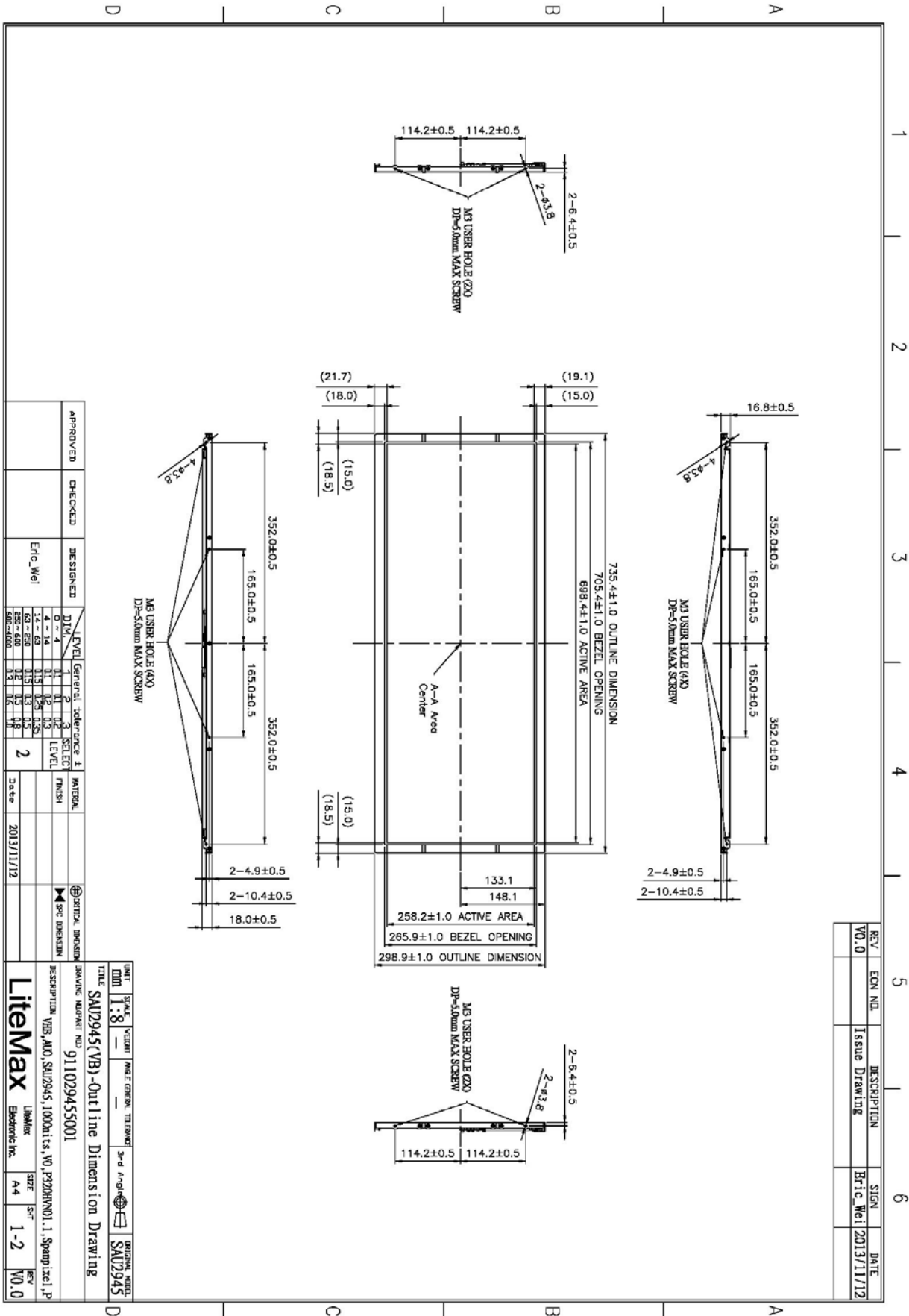
**SSF** = Panel+ LED Driving Board

**SSH** = Panel+ LED Driving Board + Control Board



## Mechanical Drawing

### Outline Dimensions

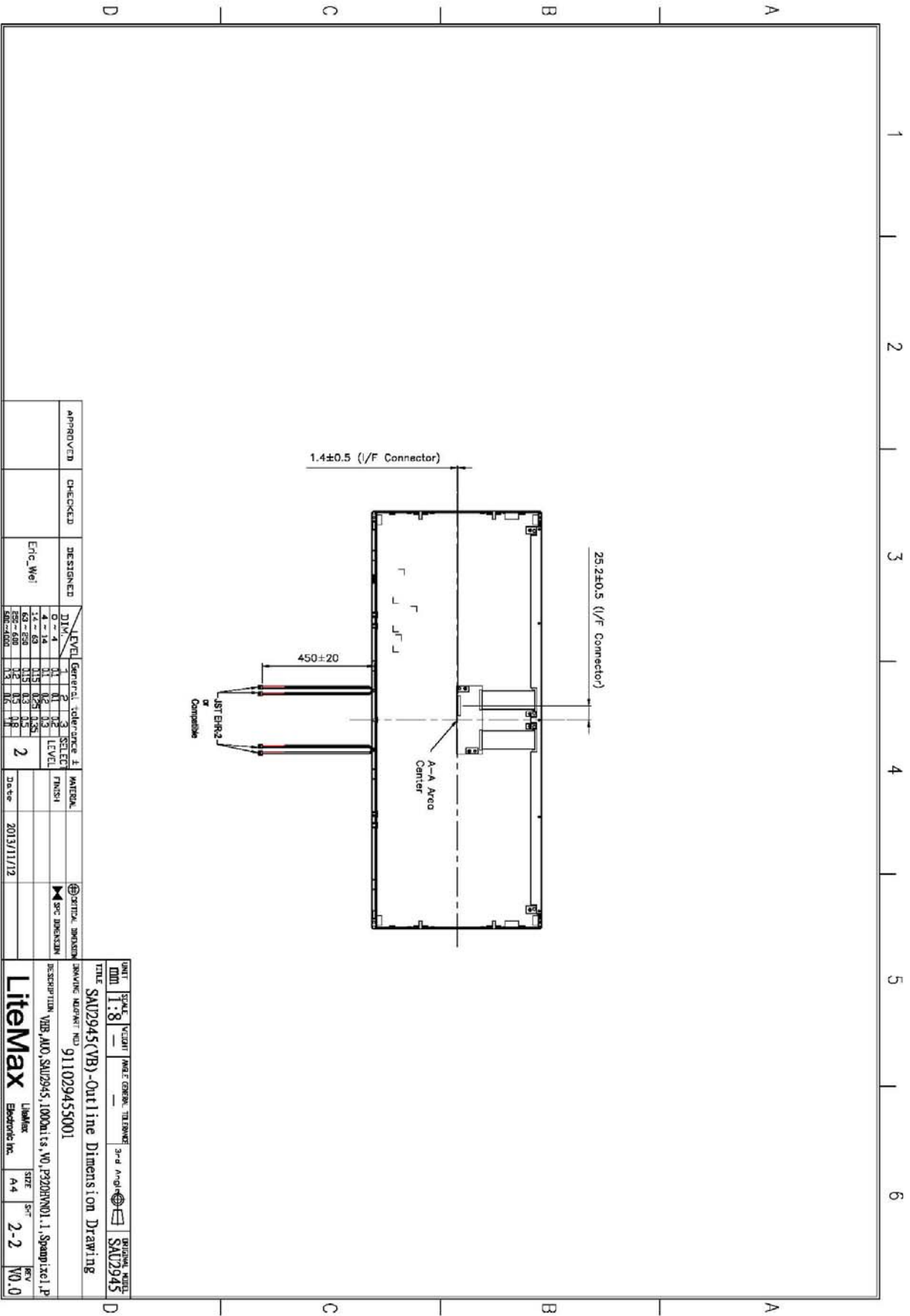


APPROVED	CHECKED	DESIGNED	DIV.	LEVEL	General Tolerance 1	MATERIAL	DATE
		Eric Wei	0-4	1	2		2013/11/12
			4-14	11	12		
			15-24	13	14		
			25-34	15	16		
			35-44	17	18		
			45-54	19	20		
			55-64	21	22		
			65-74	23	24		
			75-84	25	26		
			85-94	27	28		
			95-100	29	30		

UNIT	SCALE	VELOCITY	NAME	GENERAL TOLERANCE	3rd Angle Projection	DRIVING UNIT
mm	1:8					
TITLE SAU2945(VB)-Outline Dimension Drawing						
DESCRIPTION VIB_MU0_SAU2945_1000units_V0_P20201101.1_Spand1x01.P						
DRAWING NUMBER: 9111029455001						
LitensMax						
Linking	SIZE	SIZE	REV			
Eric Wei Inc.	A4	1-2	V0.0			

REV	ECN NO.	DESCRIPTION	SIGN	DATE
V0.0		Issue Drawing	Eric Wei	2013/11/12

A4 297x210mm



A4 297x210mm

UNIT	SCALE	VELOCITY	IMAGE CENTER	TELESCOPE	3rd A-angle	ORIGINAL FILE
mm	1:8					SAU2945
TITLE SAU2945(VB)-Outline Dimension Drawing						
DRAWING NUMBER NO 9111029455001						
DESCRIPTION VBR_AU0_SAU2945_1000units_V0_P220RHV001_1_Samp1xel.P						
Litemax		Unit/Mark	SIZE	Str	REV	
Electronic Inc.		A-4	2-2	W0.0		



### Ordering Information

Model Name	Description
SSF2945-ENN-A11	29.3",1000nits,1920*710.LID29A,V02(2 in 1)
SSH2945-ENN-G11	29.3",1000nits,1920*710.LID29A,AD2662GD,DC 12V.V02(2 in 1)
SSH2945-ENN-G12	29.3",1000nits,1920*710.LID29A,AD2662GDHM,DC12V.V02(2 in 1)

### Optional Accessories

Part Number	Description
810618301010 (Optional)	CABLE.POWER.AC.1830mm.(US Type).3PIN PLUG TO SOCKET.SVT(SPT-2 )18AWG 3C BLACK,P.
810618301090 (Optional)	CABLE,POWER,AC,1830mm.(EU Type) 3PIN PLUG TO.SOCKET,H05VV-F 3G.0.75MMSQ BLACK,P
810618301050 (Optional)	CABLE,POWER,AC,1830mm.UK(FUSE) 3PIN PLUG TO.SOCKET,H05VV-F 3C(3G) 0.75MMSQ BLACK,P
810618301170 (Optional)	CABLE.POWER,AC,1830mm. (AU Type) 3PIN PLUG TO 2P SOCKET.LTSA 0.75MMSQ BLACK,P
810618301030 (Optional)	CABLE.POWER.AC.1830mm.(JP Type).2PIN PLUG Y TERMINAL TO. SOCKET.VCTF 3C 0.75MMSQ BLACK,P