



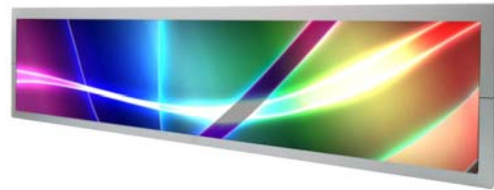
SSF2845/SSH2845-E V3

28”Resizing LCD,1000 nits LED backlight, 1920x357 ultra wide aspect ratio 16:3

SSF2845/SSH2845-E V3 is an innovative ultra-wide, sunlight readable, LED backlight LCD display. it provides LCD panel with specific ratios for digital signage, public transportation, exhibition hall, department store, vending machine and industrial applications. Incorporating with A.D. control board and backlight design, it is high brightness and sunlight readable panel, can display high-quality video with energy-efficient.

Key Features

- Resizing LCD
- Ultra Wide Screen (16 : 3)
- Sunlight Readable
- LED Backlight
- High Brightness 1000 nits
- Low Power Consumption
- Wide Dimming
- Life Expectancy (70,000hrs)
- Wide Viewing Angle



Specifications		V1
Model No.	SSF2845/SSH2845-E V3	
Description	28” Resizing LCD, 1000 nits LED backlight, 1920x357	
Display Area	698.4 x 129.8 mm	
Brightness	1000 cd/m ²	
Resolution	1920 x 357	
Aspect Ratio	16 : 3	
Contrast Ratio	6500:1	
Pixel Pitch (mm)	0.3637 x 0.3637	
Pixel Pre Inch (PPI)	69.7	
Viewing Angle	178°(H), 178°(V)	
Display Colors	16.7M	
Response Time (Typical)	6.5 ms	
Sync	LVDS	
Power Consumption	30W/35W	
Dimensions (mm)	735.4 x 170.5 x 18	
Weight (Net)	2.1 Kg /2.3 kg	
LED Driving Board	LID28A	
Control Board (Optional)	AD2662GD / AD2662GDVAR	
<input type="checkbox"/> AD2662GD	VGA + DVI	
<input type="checkbox"/> AD2662GDVAR	VGA + DVI (Optional AV/ S-Video / Component / Audio)	
<input type="checkbox"/> Others		
F / R Control Button	5 Key / 4 Key	
<input type="checkbox"/> 4 Key	Power Switch, Menu, Select (+,-),	
<input type="checkbox"/> 5 Key	Power Switch, Menu, Select (+,-),Auto	
OSD Menu	Brightness, Contrast, H/V Position, Color, Phase, Clock...	
Optional	<input type="checkbox"/> Touch Screen	

Specifications are subject to change without notice.

All brands or product names are trademarks or registered trademarks of their respective companies.

SSF= Panel+ LED Driving Board

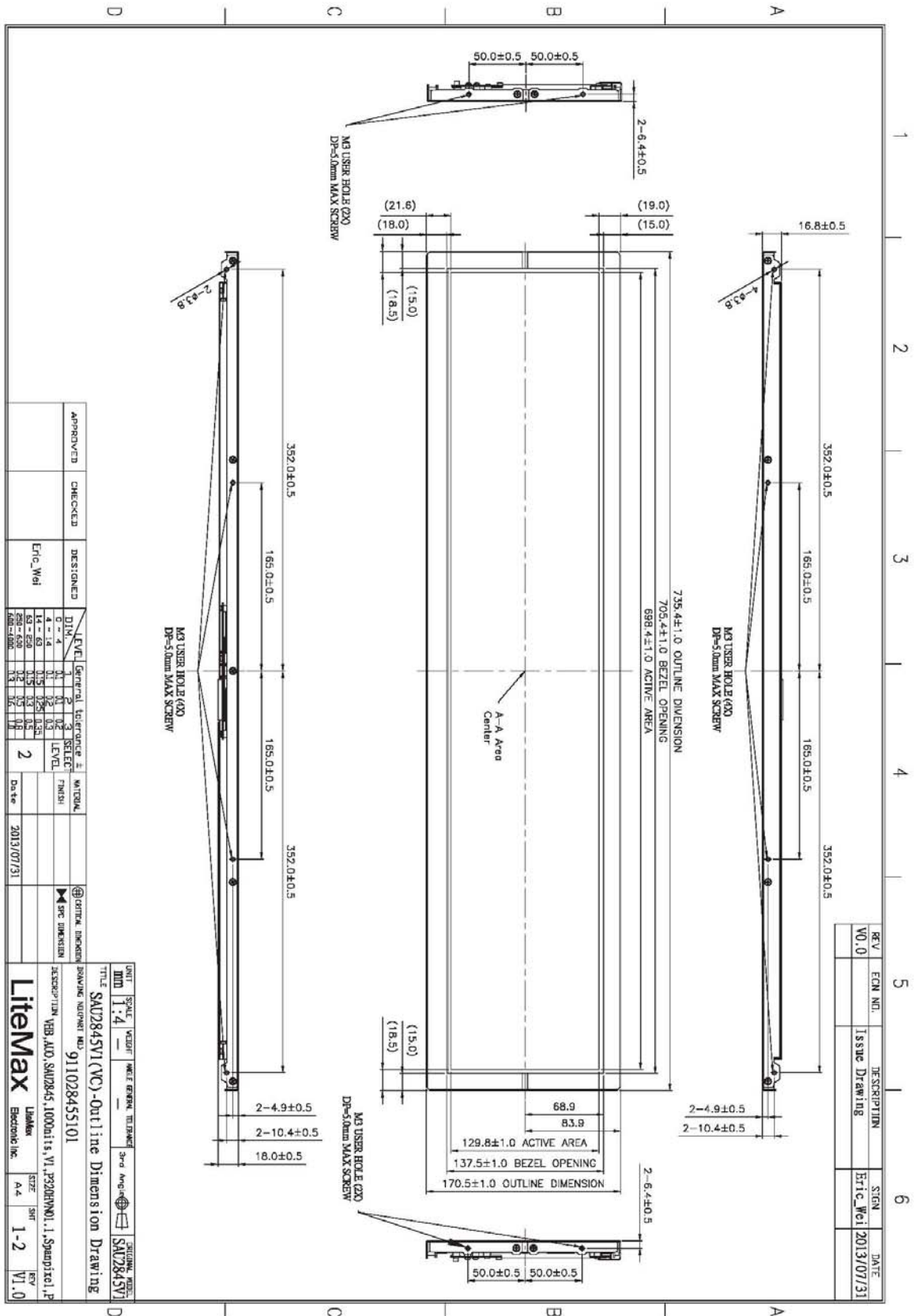
SSH= Panel+ LED Driving Board + Control Board



Mechanical Drawing

Outline Dimensions

Unit: mm





Ordering Information

Model Name	Description
SSF2845-ENN-A21	28",1000nits,1920*357,LID28A.V03(4 in 1)
SSH2845-ENN-G21	28",1000nits,1920*357,LID28A.AD2662GD,DC 12V input.V03(4 in 1)

Optional Accessories

Part Number	Description
840612051210 (Optional)	ADAPTER,AC/DC,12V/5.4A,65W,Atech OEM A065112-TDx.4P SLIDING CAP,P
810618301010 (Optional)	CABLE.POWER.AC.1830mm.(US Type).3PIN PLUG TO SOCKET.SVT(SPT-2)18AWG 3C BLACK,P.
810618301090 (Optional)	CABLE,POWER,AC,1830mm.(EU Type) 3PIN PLUG TO.SOCKET,H05VV-F 3G.0.75MMSQ BLACK,P
810618301050 (Optional)	CABLE,POWER,AC,1830mm.UK(FUSE) 3PIN PLUG TO.SOCKET,H05VV-F 3C(3G) 0.75MMSQ BLACK,P
810618301170 (Optional)	CABLE.POWER,AC,1830mm. (AU Type) 3PIN PLUG TO 2P SOCKET.LTSA 0.75MMSQ BLACK,P
810618301030 (Optional)	CABLE.POWER.AC.1830mm.(JP Type).2PIN PLUG Y TERMINAL TO. SOCKET.VCTF 3C 0.75MMSQ BLACK,P